

# Staebel Total Flow Alternating Air Overlay Mattress System

Product Code: 3-CM-M-OL

Staebel Total Flow Air Mattress – an overlay alternating pressure relieving mattress system with 5” air cells for effective prevention and treatment of patients at high risk category. This mattress enables the carer to quickly set up the mattress system and have it operating at optimal pressure for a specific user with ease.

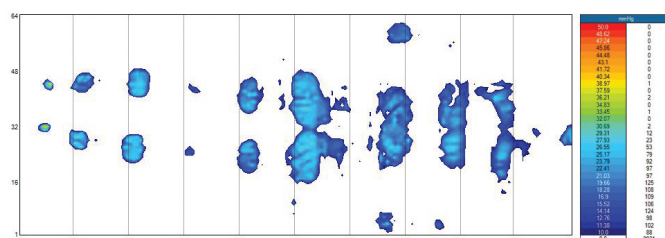
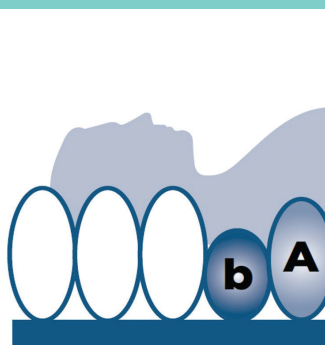


## Product Features:

- Nylon TPU
- Independently Removable Cells
- Cell Structure: cell-on-cell
- Covert sealed air cells
- Transport Mode
- Pillow Function
- CPR Release
- Anchoring Straps
- Zipped storage bag
- Multi-stretch, waterproof & vapour permeable PU cover
- Micro-perforated cells
- Antimicrobial, machine washable
- 360 Degree zipper
- Robust pump connection

## Specifications:

Size	Single	King Single
Width	900 mm	1070 mm
Length	2000 mm	2000 mm
Thickness	127 mm	127 mm
Weight	5.5 kg	5.5 kg
SWL	160 kg	160 kg



# A highly versatile and cost effective mattress solution.

Total Flow incorporates cutting-edge Total Air Technology - constant auto pressure sensing through an air sensor and microcomputer regulator to provide ultra-low interface pressure and promote an even ambience for natural sleep patterns and stable blood circulation with silent pump operation.



## Specifications:

Width	240 mm
Length	345 mm
Height	125 mm
Weight	2.8 kg

## Pump Features:

- Operating System: Total Air Technology
- Cycle Time: 10, 15, 20, 25 minutes
- Memory function
- Air Output: 8 litres/minute
- Power Input: AC220-240V, 50-60Hz
- Power Consumption: 7W
- Fitted with hanging brackets

## Control Panel:

